



Greenwich Hospital: An Era of Renewal

As a member of the Yale New Haven Health System, Greenwich Hospital has become the healthcare provider of choice for thousands in Connecticut and New York who rely on its broad range of emergency, inpatient and outpatient services.

Annual Report 2006



Greenwich Hospital: An Era of Renewal

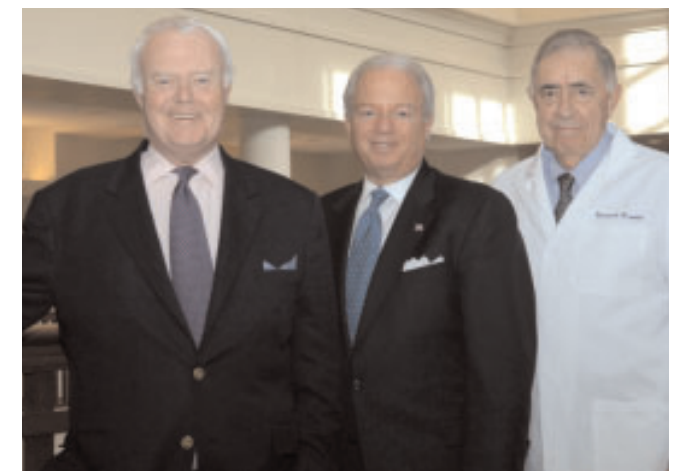
Greenwich Hospital celebrated a year of milestones that began with the opening of the Olive and Thomas J. Watson, Jr. Pavilion and ended with the dedication of the Carl and Dorothy Bennett Community Garden – concluding an era of renewal. In that time, Greenwich Hospital grew from a small community hospital to a premier, regional health facility with a national reputation for patient safety, clinical excellence and customer service.

As a member of the Yale New Haven Health System, Greenwich Hospital has become the healthcare provider of choice for thousands in Connecticut and New York who rely on its broad range of emergency, inpatient and outpatient services. With more than 12,000 inpatient admissions, Greenwich Hospital now qualifies as a medium-sized hospital based on Connecticut Hospital Association criteria. Meantime, the medical staff continues to grow with the addition of new

physicians from New York and Connecticut. All this has helped to strengthen Greenwich Hospital's position in a competitive arena.

These accomplishments would not have been possible without the dedication and skill of physicians, nurses, staff, volunteers, trustees and residents in Greenwich and beyond.

They provide the inspiration and foundation that keep Greenwich Hospital poised to address the changing needs of the communities it serves.



Left to right: Arthur C. Martinez, Chairman, Board of Trustees; Frank A. Corvino, President & CEO; Frederick E. Siefert, MD, Chief of Staff

Yale New Haven Health System Initiatives

Greenwich Hospital's affiliation with the Yale New Haven Health System (YNHHS) expanded the scope of clinical services available to the community. In its second year of operation, the Yale New Haven Health Heart Institute at Greenwich Hospital provided on-site primary angioplasty, performed round-the-clock by interventional cardiologists from the Yale School of Medicine.

As part of a system initiative, Greenwich Hospital took part in the Institute for Healthcare Improvement's 100,000 Lives Campaign, a nationwide project enlisting thousands of hospitals committed to improving patient safety. Hospital physicians and staff participated in system-wide initiatives focusing on patient safety, clinical quality and financial performance. They also helped

develop the performance management training curriculum taught at the YNHHS Institute for Excellence.

Greenwich Hospital realized cost savings totaling \$1,550,000 by working with YNHHS to deliver healthcare services in the most efficient and economical manner. The savings were achieved through coordinated system-wide efforts.

Strategic Planning

As part of Greenwich Hospital's long-range strategic planning efforts, a comprehensive strategic review was conducted during the year. The hospital initiated a process, driven by the Board of Trustees, to develop a strategic plan for the hospital to meet the needs of a changing marketplace. A thorough analysis of internal and external factors impacting Greenwich Hospital now and in the future was conducted. The new strategic plan will position the hospital to respond proactively to the future needs of our communities.

Patient Satisfaction and Service Excellence

In an increasingly tight market, Greenwich Hospital continued its focus on service excellence with

patient satisfaction scores that exceeded targets for inpatient, outpatient and emergency services for a sixth year. All major areas of the hospital are surveyed by Press Ganey Associates, the industry leader in healthcare satisfaction measurement.

To enhance the experience of patients, the hospital implemented a central scheduling system for all diagnostic radiology services, in addition to a pager system for patients waiting for radiology services and for families of surgical patients. Patients appreciated steps that facilitated the discharge process, including a new "Welcome to Greenwich Hospital" card with key information and the "Way to Go" hot lunch program for patients heading home.

New Greenwich Hospital Campus

The opening of the Olive and Thomas J. Watson, Jr. Pavilion and the dedication of the Carl and Dorothy Bennett Community Garden formally concluded ten years of hospital construction that completely revamped the entire campus. During that time, patient care continued without interruption and our patient satisfaction scores ranked among the top in the nation.



The Watson Pavilion, which is seamlessly connected to the Helmsley Medical Building, offers patients and physicians a state-of-the-art medical facility. The 2.5-acre community garden provides a haven for patients, visitors and staff. Focal points include a 9/11 memorial sculpture, a fountain, bluestone terrace, and a walkway paved with bricks donated by hospital supporters.

Generous community contributions enabled the hospital to reach its capital campaign goal of \$67 million for the Watson Pavilion. The cost of the entire campus, including the Watson and Helmsley buildings, was \$200 million, of which \$138 million came from community donations.

Quality and Performance Achievements

In the area of patient safety, Greenwich Hospital won the prestigious "2006 Silver Connecticut Quality Improvement Award

Partnership's CQIA Innovation Prize" for its work to prevent central venous catheter-related blood stream infections. The CQIA is the nation's first state-level quality award and uses the Malcolm Baldrige National Quality for Performance Excellence criteria to advance innovations that improve quality.

Many programs and staff were cited for excellence. Greenwich Hospital's Healing Touch program won the system-wide 2006 Joseph Zaccagnino Patient Safety and Clinical Quality Award for a pilot study on the effectiveness of healing touch. Emergency department nurses were named among the "Best Nursing Teams for 2006" by ADVANCE for Nurses news-magazine. In addition, Greenwich Hospital will be featured in an upcoming book about leadership in healthcare.

Greenwich Hospital received numerous certifications and accreditations

during the year. The hospital was accredited as a Primary Stroke Center by the Joint Commission on the Accreditation of Healthcare Organizations. The home hospice program was relicensed by state health officials, while the Breast Center successfully underwent its MQSA (Mammography Quality Standards Act) inspection. The Blood Gas Laboratory was successfully reaccredited, with reviewers requesting permission to duplicate the hospital's protocols to help other laboratories.

As a system member, Greenwich Hospital met or exceeded national benchmarks caring for patients with acute myocardial infarction, heart failure and pneumonia; central line infection rates; hand hygiene and contact precautions; the consistent use of patient identification verification procedures; and nosocomial infection rates.

Eighteen quality improvement teams, drawing upon the expertise of repre-



representatives from many departments, established recommendations for improvement. Ongoing multidisciplinary teams continued tracking various quality indicators for pneumonia, heart failure, acute myocardial infarction, and surgical infection.

Human Resources

Despite labor shortages in a competitive marketplace, Greenwich Hospital remained the employer of choice for hundreds of nurses and other healthcare professionals. Employee satisfaction exceeded national standards in a recent opinion survey, while turnover and vacancy rates remained below national and local averages.

Among the many opportunities for staff development was the Dale Carnegie management training program. Hospital staff also took part in Six Sigma and Lean training programs conducted by the health system.

Annual recognition traditions at the hospital continued. A total of 111 employees received recognition as Quality Award nominees for their outstanding contributions to service excellence throughout the hospital.

Awards to celebrate five to 45 years of service at the hospital went to 262 employees. The annual Marion Nowak Award was presented to an employee who exhibited exemplary behavior throughout a long hospital career.

In an effort to encourage nursing education, Greenwich Hospital continued collaborative initiatives with area educational institutions. For a fourth year, Greenwich Hospital and Fairfield University maintained its student nurse internship program and graduate nurse education program. To attract more nursing candidates, Greenwich Hospital, Stamford Hospital and Norwalk Hospital continued its partnership to jointly fund the expansion of the nursing program at Norwalk Community College. Nurses had access to numerous clinical opportunities at Greenwich Hospital, including a maternity services training program for new nurses and medical nurses entering obstetric or neonatal care, and a geriatric resource training

program for nurses wanting advanced training in geriatrics. The YNHHS Institute of Excellence also provided nurses and other clinical leaders with programs to develop their skills.

Patient Volume and Growth

With more than 12,000 inpatient admissions, Greenwich Hospital now qualifies as a medium-sized hospital based on Connecticut Hospital Association criteria. The hospital expanded its market share to 27 percent within its primary service area, an increase of one percent from last year.

Thousands of area residents turned to Greenwich Hospital for inpatient, outpatient and emergency care. Inpatient admissions reached 12,247, representing a 3.1 percent increase from the previous year. The average length of stay was 3.9 days. Outpatient volume totaled 388,499 visits, while Emergency Department visits reached 38,659.

New York continued to represent a growing segment of the hospital's service area, accounting for nearly 40 percent of all hospital admissions and 47 percent of new medical staff.

Looking to the future, the hospital's Board of

Trustees developed a long-range strategic plan to respond to changing community needs. As a result, the hospital redefined its primary and secondary service areas, which now include Fairfield County towns (Darien, Greenwich, New Canaan, Norwalk and Stamford) and Westchester County towns (Armonk, Bedford, Harrison, Larchmont, Mamaroneck, New Rochelle, Port Chester, Pound Ridge, Purchase, Rye, Scarsdale, White Plains and Yonkers).

Managed care business increased 4.5 percent and inpatient managed care volume was up 3 percent compared to last year.

Medical Staff

Greenwich Hospital's medical staff expanded with the addition of 45 physicians. The new staff includes 17 physi-

cians in primary care (internal medicine, family practice, pediatrics, and obstetrics and gynecology) and 28 specialty physicians, including two emergency medicine physicians and a breast surgeon. Forty-seven percent of the new physicians practice in New York (20 in Westchester County and one in New York City).

Efforts continued to implement strategies enabling physicians to remotely access hospital information systems and applications. The physician referral system was implemented on the hospital website and a physician newsletter facilitated communication with the medical staff.

Greenwich Hospital continued its long-term relationship with the Yale School of Medicine's internal medicine residency program, which received a record number of applications.

Clinical Initiatives and New Programs

ACE Unit

The Carl and Dorothy Bennett Acute Care for the Elderly Center (ACE) reopened in the Watson Pavilion. The 12-bed unit provides specialized care for frail, older patients.

Ambulatory Medical Unit

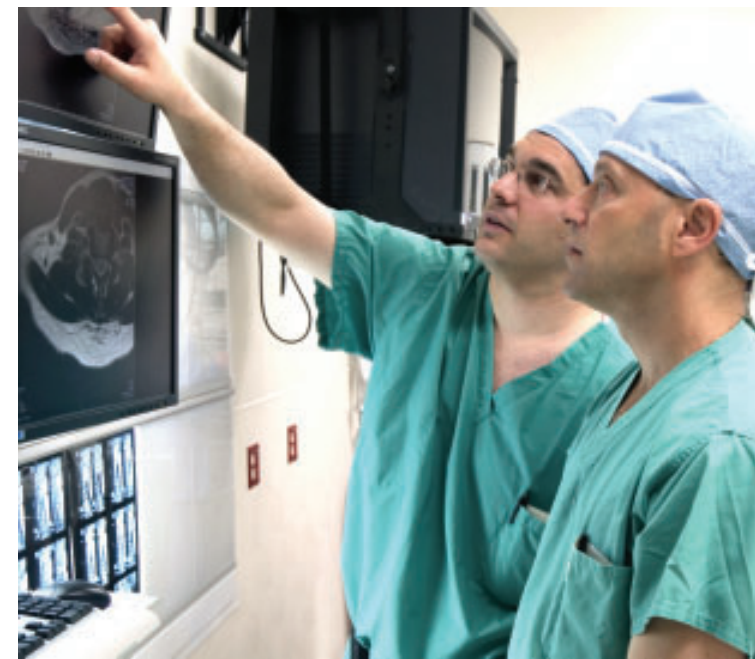
The new Ambulatory Medical Unit includes the gastrointestinal endoscopy suite and the pain management program. The unit also handles other ambulatory medical services such as angiograms and magnetic resonance imaging procedures requiring anesthesia.

Ambulatory Surgery Center

To meet demand for services, the hospital conducted a feasibility analysis and submitted a letter of intent to the state to develop an off-site ambulatory surgery center.

Cardiac Wellness Center

The Cardiac Wellness Center, which focuses on prevention and education, opened at the Healthy Living Center. The center houses the "Cardiovascular Prevention Program," which offers comprehensive risk assessment; "Lose to Win," an obesity management program; and the "Diabetes Resource



Program,” a diabetes self-management and education program.

Diagnostic Imaging

Greenwich Hospital became the first hospital in Fairfield County to offer diagnostic imaging with a new Lightspeed VCT (volume computed tomography) 64-slice scanner. With the ability to produce detailed images of the body in seconds, this scanner expands the non-invasive cardiovascular imaging services offered by the hospital.

Emergency Department

To better serve patients, the Emergency Department expanded to include seven examination rooms, including two additional fast-track rooms for non life-threatening emergencies; a new behavioral health suite; and a clinical decision unit to assess at-risk patients. The department handled a record 38,659 visits from Connecticut and New York residents.

Center for Healthy Aging

Hospital staff participated in system-wide initiatives focusing on key factors affecting the care of older patients.

Healing Touch

The Healing Touch program won the Yale New Haven Health System 2006 Joseph Zaccagnino Patient Safety and Clinical Quality Award. Eighty volunteers have been trained in this technique, which uses touch to influence the body’s energy field and promote physical and emotional well-being.

Hospitalists

The number of hospitalists on staff was expanded to include pediatrics, obstetrics and medicine.

HUGS

The HUGS tag system was expanded from newborns to include all inpatient pediatric patients. HUGS are electronic security devices used to enhance child safety during hospitalization.

Integrative Medicine

Greenwich Hospital received an anonymous \$1 million gift to expand and move the Integrative Medicine Program to an off-site location. The hospital is among the few nationwide to offer integrative medicine services, including acupuncture, stress management, meditation and more. The department also sponsored two lectures, including the Bob Rosum Memorial Lecture, featuring nationally acclaimed experts on alternative medicine.

Laboratory

A new draw station opened in Stamford and plans were completed for a Westport location through a joint venture with Bridgeport Hospital.

Maternal/Child Services

The newly renovated Olive C. Watson Birthing Center was converted to all private rooms to meet patient requests. The unit features 25 private mother/baby rooms large enough to accommodate loved ones who want to spend the night. The unit includes eight labor and delivery rooms, testing rooms, a



maternal-fetal medicine unit for high-risk pregnancies, two cesarean section operating rooms, two well-baby nurseries and a level III neonatal intensive care unit. The fetal monitoring surveillance system was upgraded. In addition, all newborns now receive free hearing screenings. The number of babies born at the hospital totaled 2,165.

Occupational Health

Ten Westchester County companies contracted with the department for worker compensation services. Occupational Health also began a medically based, physician-run outpatient detoxification therapy program, offered on-site.

Oncology Initiatives

A new director of oncological surgery was appointed. The hospital also developed a comprehensive strategic plan to strengthen oncology services, including initiatives to coordinate all modalities and hire a program director. In the area of radiation therapy, the hospital replaced its radiation oncology simulator and plans to submit a proposal to the state to update its linear accelerator services. Collaborative efforts with the integrative medicine program continued to bring a range of complementary therapies to patients.

Pediatrics

The new Berkley Center for Pediatric Care in the Watson Pavilion includes adjacent inpatient and outpatient units, making it easier for families to access all pediatric services. A team of pediatric nurse practitioners, along with the hospital’s pediatrician, provides comprehensive care to children needing outpatient or inpatient medical services.

Perinatology

All perinatology services were relocated to the maternity unit, making it possible for women to access the full spectrum of maternity services at one location.

Rapid Response Team

As part of the 100,000 Lives Campaign to improve patient safety and save lives, Greenwich Hospital implemented a hospital-wide rapid response team. This team includes multidisciplinary critical care experts who perform a rapid clinical assessment at the first sign of patient decline.

Sleep Center

The hospital’s Sleep Laboratory was upgraded to Sleep Center status by the American Academy of Sleep Medicine.



Stroke Center

The Joint Commission on Accreditation of Healthcare Organizations certified Greenwich Hospital as a stroke center, one of only three in Connecticut. The hospital has an interdisciplinary rapid response stroke team, plus support services for patients and families.

Surgical Services

A ninth operating room was added and all operating rooms were reconfigured into universal ORs for increased capacity and efficiency to meet physician and patient demand for services. Surgical staff was cross-trained and a team structure implemented to further increase efficiency.

Community Outreach & Patient Support Services

Baby Reunion

More than 700 babies and their families attended the annual reunion for all babies born at the hospital.

CPR Classes

Greenwich Health at Greenwich Hospital offered infant, child and adult cardiopulmonary resuscitation classes through the American Heart Association to nearly 200 people. Classes were held at the hospital and at business and community locations in Connecticut and New York.

Families for Greenwich Hospital

Families for Greenwich Hospital worked closely with the Development Department to provide community education programs on kindergarten readiness and parenting through the middle school years. Its annual family event, which drew hundreds from Connecticut and New York, helped raise funds for pediatric programs at the hospital.

Focus Magazine/ Health Extensions

These two popular publications, which highlight hospital services and programs, were sent to over 95,000 households in the service area.

Focus was published twice during the year, while Health Extensions came out five times.

Generations

Individuals age 50 and over continued to reap the benefits of this free program to enhance their health through seminars, wellness programs and health screenings.

Greenwich Health at Greenwich Hospital (GHGH)

GHGH offered hundreds of wellness classes, health screenings, educational seminars and support groups to the community. Programs were expanded in Westchester County to reflect the hospital's increased presence in New York.

Greenwich Health Improvement Partnership

Three task forces of the Greenwich Health Improvement Partnership continued meeting to develop strategies to improve the health of the community. The initiatives launched included a mental health/behavioral health summit; a school nutrition program to decrease childhood obesity; a program on smoking for middle school and high school students; and a program targeted to parents of adolescents on the dangers of drug and alcohol use among teens.



Greenwich Library Lecture Series

Greenwich Hospital continued its collaboration with Greenwich Library with co-sponsored lectures on stroke and cancer that drew hundreds of people to the library.

Health Education

Dozens of health fairs at schools, community sites and businesses were held in conjunction with Greenwich Health at Greenwich Hospital and the Occupational Health Department. The hospital also participated in health awareness events for children, in cooperation with local youth agencies.

"I Can Cope"

In cooperation with the American Cancer Society, Greenwich Health at Greenwich Hospital offered the four-part "I Can Cope" program twice during the year, serving more than 100 people.

Lions Low Vision Center

The Greenwich Hospital Lions Low Vision Center assisted 32 persons suffering from moderate visual impairment to maximize their remaining vision.

Low Cost Screenings

The hospital offered free and low-cost screenings for early detection of chronic diseases, such as cancer and heart disease. These included more than 7,000 blood pressure screenings; more than 400 cholesterol screenings; and more than 80 free prostate screenings targeting higher-risk African-American and Hispanic men.

Mammograms

Support from the Breast Cancer Alliance enabled the hospital to provide 150 free and low-cost screening mammograms for uninsured and underinsured women. The Breast Cancer Alliance continued to provide funding for diagnostic mammograms.

Maximizing Your Outcome

More than 120 people took advantage of the hospital's program for newly-diagnosed breast cancer patients, their spouses and friends.

On-Line Newsletters and Class Registration

To help people access services, the hospital implemented online class registration via the Call Center. Consumers may now register for support groups, classes and special events on the hospital website. The first issue of Health e-Outlook, the hospital's e-mail newsletter, was sent to over 900 consumers.

Parish Nurse Program

A parish nursing program continued with the First Congregational Church of Greenwich. In addition to reaching out to homebound parishioners, a registered nurse organized on-site flu shot clinics, health screening programs, and a bereavement support group.

Pastoral Care Outreach

The Spiritual Care Department hosted a pastoral care outreach effort with religious leaders in Port Chester, NY. The religious leaders registered with the hospital, which enables them to attend to parishioners who may be admitted for care.



Pre-Adoption Seminar

In conjunction with the Yale New Haven Health System, Greenwich Hospital hosted a community seminar on pre-adoption issues.

Radio Programming

A new live radio program entitled “Focus on Your Health” aired on WFAS-AM 1230 in Westchester County. Hosted by Greenwich Hospital’s chief executive officer, the weekly program focused on various health issues. “Spotlight on Medicine,” a weekly live radio program on WGCH-AM 1490 in Greenwich, continued featuring physicians and professional staff.

School-Based Smoking Prevention Program

More than 100 school children learned about the health hazards of smoking through a new program provided at Greenwich middle and high schools in conjunction with Greenwich Health at Greenwich Hospital and the hospital’s Oncology Department.

Skin Cancer Awareness Education

A community outreach nurse presented an aggressive skin cancer education program to 15 community groups, reaching 600 individuals.

Stroke Alert

Greenwich Health at Greenwich Hospital sponsored a symposium during Stroke Awareness Month, including presentations by physicians, nurses and pharmacists.

Support Groups

The hospital offered dozens of support groups, helping thousands to cope with issues ranging from cancer, chronic pain and diabetes to sleep apnea, stroke and Parkinson’s disease.

Teddy Bear Clinic

The hospital’s eighth annual Teddy Bear Clinic drew more than 1,400 area residents. This mini-hospital under a tent is designed to familiarize children with healthcare procedures.

Tender Beginnings

Thousands of expectant parents, siblings and grandparents took part in the Tender Beginnings program, which provides classes to help families through the birthing experience.

The Nurse Is In

Available five days per week, the Nurse Is In program provided free blood pressure screening and counseling to community members.

Under-Age Drinking Seminar

Greenwich Hospital, along with the Greenwich Coalition to Combat Under-Age Drinking, sponsored a seminar to educate parents on the medical issues surrounding under-age drinking.

Westchester Library Lecture Series

To increase awareness of Greenwich Hospital in Westchester County, Greenwich Health at Greenwich Hospital sponsored a series of health-related lectures (in English and Spanish) in the Port Chester and Rye libraries.

Women’s Health Initiative Advisory Board

The Women’s Health Initiative Advisory Board sponsored lectures by nationally acclaimed experts on women and heart disease, women’s sexuality, and maintaining a healthy brain.

Women’s Heart Advantage

As part of the Yale New Haven Health Heart Institute at Greenwich Hospital, Greenwich Hospital continued to participate in the system-wide Women’s Heart Advantage Initiative.

Women’s Resource Center

Located within the hospital’s medical library and staffed by a registered nurse, the new Women’s Resource Center offers visitors access to internet and printed healthcare resources, plus information about hospital and community programs.

Volunteer Services and Auxiliary

The Greenwich Hospital Auxiliary continued supporting the hospital’s efforts to deliver superior care through the work of its volunteers and financial contributions. The Auxiliary donated \$100,000 to the hospital as part of a five-year, \$1 million pledge. Four scholarships were awarded to high school graduates planning to pursue health-related careers. The donations came from revenue raised primarily from the thrift and gift shops. The Auxiliary included 600 adults and teenage volunteers who gave close to 52,000 hours of service to the hospital.

Finance/Information Systems

Enhancing information technology and applications to improve the delivery and safety of patient care was a priority at Greenwich Hospital. For the sixth year, Greenwich Hospital was named one of the nation’s “Top 100 Most Wired Hospitals” by Hospitals and Health Networks magazine.

**Looking Forward**

As we look toward the future, Greenwich Hospital will continue taking a progressive approach to delivering superior healthcare, assembling the finest medical team and acquiring the latest technology. The completion of the new Greenwich Hospital campus strategically positions the hospital to meet future demands, including responding to the fluctuating needs of patients in Connecticut and New York. An era of renewal has provided Greenwich Hospital with a new opportunity to strengthen its long-standing tradition of serving the community.



Balance Sheet
(Dollars in thousands)
Year ended
September 30, 2006

Assets		
Current Assets:		
Cash & cash equivalents	\$	15,296
Marketable securities		41,388
Patient accounts receivable, less allowance for doubtful accounts of approximately \$5,992,000		28,705
Other receivables		8,350
Inventories		704
Prepaid expenses & other current assets		2,529
Total Current Assets		96,972
Assets whose use are limited:		
Trustee assets - self insurance		933
By board designation		6,340
Total Assets whose use are limited		7,273
Other Assets:		
Investments held for restricted purposes		84,697
Property and equipment		232,569
Prepaid pension expense		6,215
Due from parent & affiliates		12,101
Pledges and trusts received		19,073
Deferred financing cost		1,461
Other assets		1,386
Total Other Assets		357,502
Total Assets:		\$ 461,747

Liabilities and Fund Balance

Current Liabilities:		
Accounts payable & accrued expenses	\$	10,564
Accrued salaries & vacation		14,309
Current portion of bond payable		2,025
Other current liabilities		4,917
Total Current Liabilities		31,815
Estimated professional self-insurance liability		9,289
Bonds payable		54,575
Other long-term liabilities		9,985
Total Liabilities		105,664
Net Assets:		
Unrestricted		305,015
Temporarily restricted		29,119
Permanently restricted		21,949
Total Net Assets		356,083
Total Liabilities & Net Assets:		\$ 461,747

Operating Revenues

We billed patients	\$	557,329
But because of required contractual and other allowances and the inability of some patients to pay their bills in full, we could not collect		331,780
Therefore we received from patients		225,549
Other operating revenues were		13,477
So that our total operating revenue was		239,026

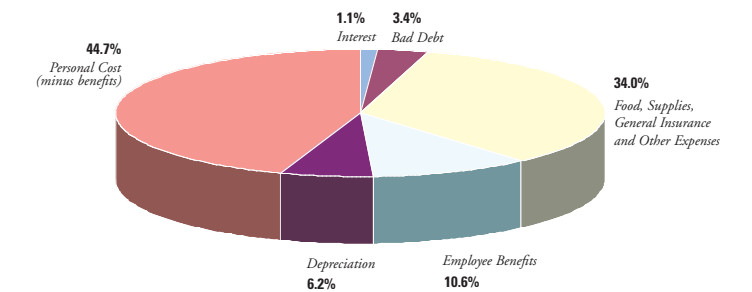
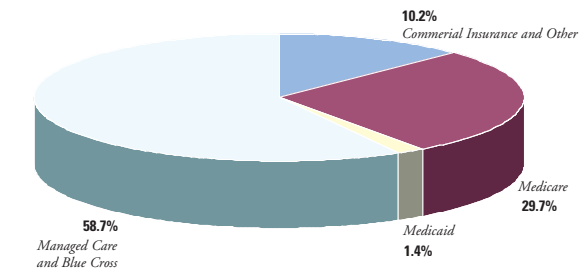
Operating Expenses

We paid salaries	104,346
And for employee benefits	24,656
For food, supplies, general insurance and other expenses	79,003
For interest	2,614
For depreciation	14,427
For bad debt	7,987
For a total of	233,033
Therefore we had a net operating position of	\$ 5,993

Statement of Revenues and Expenses from Operations
(Dollars in thousands)
Year ended
September 30, 2006

The Greenwich Hospital Dollar 2006

Where it came from and where it went



Statistical Review
Year ended
September 30, 2006

Patient beds	174
Bassinets	32
Average census	131.7
Patient days of care	48,083
Average length of stay (days)	3.9
Admissions	12,379
Newborns	2,095
Recovery Center admissions	294
Emergency Medicine visits	38,329
Outpatient Medical/Dental Clinic visits	13,102
Operating Room procedures (total)	8,531
Ambulatory procedures (total)	16,880
surgical procedures	6,275
medical procedures	10,605
Cancer Center visits	27,860
Diagnostic Services (EEG, EKG, EMG, Cardiac Lab, Cardiac Catheterization)	32,325
Cardiac Rehabilitation visits	17,933
Hearing, Speech & Language visits	4,546
Laboratory procedures	1,418,675
Laser procedures	95
Pharmacy orders filled (inpatient & outpatient)	707,447
Physical Medicine & Rehabilitation treatments	29,972
Psychiatric Treatment Center visits	9,565
Radiologic procedures	130,396

Greenwich Hospital Family

Trustees (including ex officio)	29
Active Medical Staff	289
Courtesy Staff	8
Consulting Staff	53
Visiting Physicians	145
Outpatient Dental Staff	45
House Staff (residents)	23
Employees	1,843
Volunteers	614
Volunteer hours	59,047

Hospital Trustees & Greenwich Health Care Services, Inc.

Directors as of December 1, 2006

Arthur C. Martinez
Chairman
Daniel L. Mosley
Vice Chairman
Frank A. Corvino
President & CEO
Donald J. Kirk
Treasurer
Elizabeth G. Galt
Secretary

Hospital Trustees

Alan W. Breed
Nancy C. Brown
Gayle L. Capozzalo
Frank A. Corvino
S. Wear Culvahouse, MD
Elizabeth G. Galt
Bruno J. Gioffre
Peter B. Griffin
Shirlee Hilton
Barbara Khouri
Donald J. Kirk
Arthur C. Martinez
James M. McTaggart
Barbara B. Miller
Jack Mitchell
Bruce M. Molinelli, MD
Margaret D. Moore
Daniel L. Mosley
Richard T. O'Connell, Jr.
Richard R. Pivrotto
Nancy Raquet
Frederick E. Siefert, MD
John L. Townsend, III
David W. Wallace
Bruce L. Warwick

Trustees Emeritus

Mrs. Chandler Bates, Jr.
Marshall Clark
Richard G. McClung
William J. Oppenheim
Mrs. Langdon Van Norden
John H.T. Wilson

Auxiliary Officers

Barbara Khouri
President
Harold Frost
Treasurer
Laura Hanley
Secretary

Administration

Frank A. Corvino
President & CEO
Quinton J. Friesen
Executive Vice President & COO
Barbara Delano
Sr. Vice President,
Human Resources
Eugene J. Colucci, CPA
Sr. Vice President,
Finance & CFO
A. Michael Marino, MD
Sr. Vice President,
Medical Services
Nancy Levitt-Rosenthal
Sr. Vice President,
Health Systems Development
Patricia Grant
Sr. Vice President,
Patient Care Services
George G. Pawlush
Vice President, Public Relations
Christine Beechner
Vice President,
Patient and Guest Relations
Cindy Berry
Director, Performance
Management

Physicians

As of October 18, 2006

Medical Staff

Frederick E. Siefert, MD
Chief of Staff
Bruce M. Molinelli, MD
Assistant Chief of Staff
Michael J. Franco, MD
Secretary
Stuart R. Epstein, DDS
Chief of Outpatient Dental Staff

Active Medical Staff

Anesthesiology

Gary E. Kalan, MD
Director

Hanief M. Abrahams, MD
Frederick W. Axelrod, MD
David B. Bernstein, MD
Francisco J. Brea, MD
John L. Clark, MD
Terence L. Cochran, MD
Michael Levin, MD
Elizabeth R. Ryan, MD
Paul B. Sygall, MD
Alfonso A. Tagliavia, MD
Cassandra L. Tribble, MD

Emergency Medicine

Kevin R. Brown, MD
Director
J. Allen Britvan, MD
Michael S. Canter, MD
Christopher M. Davison, MD
Servando De Los Angeles, MD
Stacey M. Donegan, MD
Brian J. Doran, MD
Steven M. Heffer, MD
William R. Hunt, MD
Priti Jain, MD
Henry C. Lin, MD
Samuel L. Siegler, MD

Medicine

Stuart W. McCalley, MD
Director
CARDIOLOGY
Harvey Seidenstein, MD
Section Head
Joel M. Blumberg, MD
Kevin E. Conboy, MD
Alexander Del Vecchio, MD
Glenn Gandelman, MD
Christopher J. Howes, MD
Judith C. Monteferrante, MD
Joseph J. Tartaglia, MD
Francis J. Neeson, MD
Robert M. Stark, MD
Ronald H. Weissman, MD

DERMATOLOGY

Richard C. Connors, MD
Section Head
Henry C. Gasiorowski, MD
Michele E. Gasiorowski, MD
Kenneth B. Goldman, MD
Lynne M. Haven, MD
Mitchell J. Ross, MD
Julia B. Sabetta, MD
Robert A. Woodbury, MD
ENDOCRINOLOGY-
METABOLISM
Judith C. Goldberg-Berman, MD, PhD
Section Head

Mary E. Arden-Cordone, MD
Alfred J. Padilla, MD

FAMILY PRACTICE

Raymond T. Sekiguchi, MD, PhD
Section Head
Gloria C. Cohen, MD
James P. Orphanos, MD

GASTROENTEROLOGY

Nelson A. Bonheim, MD
Section Head
Clifford A. Berken, MD
Robert S. Goldblatt, MD
Neda Khaghan, MD
Alan E. Selkin, MD
Neil H. Shapiro, MD
Jay S. Zimmerman, MD
Felice R. Zwas, MD

GENERAL MEDICINE

Steven P. Mickley, MD
Section Head
Anthony A. Alleva, MD
Mark D. Anderson, MD
Steven J. Bennett, DO
James S. Borges, MD
Francisco J. Brea, MD
James A. Brunetti, DO
Emily J. Chen, MD
Bridget I. Earle, MD
John A. Del Vecchio, MD
Christopher M. Edelman, MD
Catherine F. Falvey, MD
Gail M. Fennell, MD
Arthur L. Forni, MD
Steven J. Glasser, MD
Steven A. Herzig, MD
Stephen G. Jones, MD
Mary M. Kane-Brock, MD
Odysseas D. Kostas, MD
Alan I. Lebowitz, MD
Ronald M. Levine, MD
Audrey Liu, MD
Franklin A. Loria, MD
Preston N. Lurie, MD
Ellika P. Mardh, MD
Diane W. Mickley, MD
Barney D. Newman, MD
Lori Pai, MD
Thomas E. Pellechi, MD

Donna Phanumas, MD
Laura Pham, MD
Jayne F. Pincus, MD, PhD
Jeffrey S. Puglisi, MD
David M. Radin, MD
Sabitha G. Rajan, MD
Sunil Rana, MD
Burton R. Rubin, MD
Charles B. Seelig, MD
Margaret A. Sennett, MD
Judith F. Shea, MD
Frederick E. Siefert, MD
Linda R. Silberstein, MD
Maureen Steele, MD
George A. Ubogy, MD
Chetan Vaid, MD
Jeffrey H. Weinberger, MD
Ellen N. Wolfson, MD

HEMATOLOGY-ONCOLOGY

Dickerman Hollister, Jr, MD
Section Head
D. Barry Boyd, MD
Beverly J. Drucker, MD
M. Sung Woo Lee, MD
Simeon A. Schwartz, MD

IMMUNOLOGY-ALLERGY

Mark D. Litchman, MD
Section Head
Agnieszka Matczuk, MD

INFECTIOUS DISEASES

James R. Sabetta, MD
Section Head
Ralph J. Cipriani, MD
Arthur L. Forni, MD
NEPHROLOGY
Francis X. Walsh, MD
Section Head
Eric Y. Brown, MD
Brenda Chan, MD
William H. Hines, MD

NEUROLOGY

Alice H. Rusk, MD
Section Head
James R. Morris, MD, PhD
Frederick K. Nahm, MD, PhD

OCCUPATIONAL & ENVIRONMENTAL MEDICINE

John A. DelVecchio, MD
Medical Director

PHYSICAL MEDICINE & REHABILITATION

Linda F. Grant, MD
Section Head
Jeffrey M. Heftler, MD
Janet E. Freedman, MD
Halina M. Snowball, MD

PULMONARY MEDICINE

A. Michael Marino, MD
Section Head
Bruno F. DiCosmo, MD
Michael J. Franco, MD
Stuart W. McCalley, MD

RHEUMATOLOGY

Richard L. Danehower, MD
Section Head
Lana Bernstein, MD
Mark D. Litchman, MD

Obstetrics & Gynecology

Stephen F. Carolan, MD
Director
Donna E. Coletti, MD
Assistant Director
Angela N. Aslami, MD
Alan S. Berkeley, MD
Annette L. Bond, MD
Timothy P. Canavan, MD
Dzwinka C. Carroll, MD
Patricia B. Close, MD
S. Wear Culvahouse, MD
Virginia C. Daly, MD
Ranjan K. Dasgupta, MD
Leslie A. Donovan, MD
Caroline F. Filor, MD
Morris C. Finkelstein, MD, PhD
Gaetane C. Francis, MD
Vanessa A. Grano, MD
Donna J. Hagberg, MD
Edward Jacobson, MD
Masahide D. Kanayama, MD
Rebecca A. Kleban, MD
Lisa Kump Checchio, MD
Elizabeth M. Legatt, MD
John M. Migotsky, MD
Elizabeth A. Molinelli, MD
Audrey F. Miller, MD
Nicole Noyes, MD
Linda M. Reid, MD
Ronald J. Reiss, MD
Michele L. Rohr, MD
Michael D. Schechter, MD
Caterina Violi, MD
Carla J. Williams, MD
Barry R. Witt, MD
Mia M. Wright, MD

Psychiatry

Charles S. Gardner, MD
Director
Linus S. Abrams, MD
Devra L. Braun, MD
Gene Ganz, MD
William H. Hampton, MD
Peritz H. Levinson, MD
Joyce Z. Pere, MD
Joshua C. Pollack, MD
Bart A. Sloan, MD
Anatoliy M. Yanovskiy, MD
PSYCHOLOGY
Jerome Brodlie, PhD
Section Head
Steven N. Baskin, PhD
George N. Chapar, PhD
Susan Freedland, PhD
Richard A. Frohwirth, PhD
Jeffrey P. Lerner, PhD
Donald S. Resnick, PhD
Saul A. Rothenberg, PhD
Jill T. Silverman, PhD
Randall E. Weeks, PhD

Orthopaedics

John F. Crowe, MD
Director
Michael R. Clain, MD
James G. Cunningham, MD
Francis A. Ennis, MD
Steven E. Hindman, MD
Brian F. Kavanagh, MD
Seth R. Miller, MD
David P. Nocek, MD
Paul M. Sethi, MD

Pathology

Stephen R. Gray, MD
Director
Vicki L. Altmeyer, MD
Eric J. Diamond, MD
Richard N. Eisen, MD
Cynthia L. Kucher, MD
Robert D. Newman, MD
Elaine D. Waldo, MD

Pediatrics

Arnold B. Korval, MD
Director
Karen E. Beckman, MD
Alison M. Cass, MD
Loretta M. Cody, MD
Erik L. Cohen, MD
Murray Engel, MD
Ann L. Engelland, MD
David A. Hedrick, MD
Paul E. Juan, MD
Natasha B. Khosla, MD
Elizabeth Z. Krowitz, MD
Modestus Lee, MD
Stephen H. Lewis, Jr, MD
Katherine N. Mini, MD
Henry M. Rascoff, MD
Toni Lyn Salvatore, MD
Steven L. Schiz, MD
Marcie B. Schneider, MD
Stylios N. Theofanidis, MD
Gail Weiner, MD

Psychiatry

Charles S. Gardner, MD
Director
Linus S. Abrams, MD
Devra L. Braun, MD
Gene Ganz, MD
William H. Hampton, MD
Peritz H. Levinson, MD
Joyce Z. Pere, MD
Joshua C. Pollack, MD
Bart A. Sloan, MD
Anatoliy M. Yanovskiy, MD
PSYCHOLOGY
Jerome Brodlie, PhD
Section Head
Steven N. Baskin, PhD
George N. Chapar, PhD
Susan Freedland, PhD
Richard A. Frohwirth, PhD
Jeffrey P. Lerner, PhD
Donald S. Resnick, PhD
Saul A. Rothenberg, PhD
Jill T. Silverman, PhD
Randall E. Weeks, PhD

Radiology

David J. Mullen, MD
Director
David D. Evans, MD
Daniel E. Fass, MD
Christopher P. Fey, MD
Laura J. Hodges, MD
Linda R. LaTrenta, MD
Scott J. Sullivan, MD
Richard H. Velaj, MD

Surgery

Philip J. McWhorter, MD
Director
GENERAL SURGERY
Christina A. DelPin, MD
Laura Lazarus, MD
Bruce M. Molinelli, MD

Athanassios Petrotos, MD
Barbara A. Ward, MD

NEUROSURGERY

Mark H. Camel, MD
Section Head
Paul J. Apostolides, MD
Amory J. Fiore, MD
Katrina S. Firlik, MD
Zohar Ghogawala, MD
OPHTHALMOLOGY
Gina F. Gladstein, MD
Section Head
Richard D. Banyard, MD
Christienne Coates, MD
Donna L. Densel, MD
Alexis E. Finlay, MD
Gina F. Gladstein, MD
Suresh Mandava, MD
William S. Potter, III, MD
I. Rand Rodgers, MD

ORAL/DENTAL

Robert A. Aslanian, DDS
Section Head
Robert L. Ailleo, DMD
Michele Bergen-Shapiro, DMD, MD
Walter F. Bloes, DMD
Steven M. Brody, DDS
Stuart R. Epstein, DDS
Vito B. Federici, DMD
Angelo Milazzo, DDS
Richard D. Miller, DDS
Philip F.T. Pacelli, DMD, MD
Joseph F. Wallace, DDS
Thomas B. Wilson, DDS, MD
Anastasia Zarakiotis, DDS

OTOLARYNGOLOGY

Richard J. Brauer, MD
Section Head
Steven A. Bramwit, MD
Steven M. Feldman, MD
Michelle S. Marrinan, MD
Stephen J. Salzer, MD

PLASTIC SURGERY

Joel M. Rein, MD
Section Head
Keith J. Attkiss, MD
Steven A. Fern, MD
Laurence A. Kirwan, MD
Elsa M. Raskin, MD
Robert E. Reber, MD
Ian M. Rubins, MD

THORACIC/VASCULAR SURGERY

Hyman Miller, MD
Paul F. Waters, MD

UROLOGY

Jeffrey A. Ranta, MD
Section Head
William C. Brown, MD
Kevin A. Burbige, MD
Sandy M. Chin, MD
Israel Franco, MD
Nicholas Stroumbakis, MD
Paul F. Zekovic, MD

Courtesy Medical Staff

Medicine

DERMATOLOGY

Andrew Bronin, MD
INFECTIOUS DISEASES
Michael F. Parry, MD

Pediatrics

Norman Berkowitz, MD
Jeffrey L. Brown, MD
Michael N. Suchenski, MD
Mary G. Versfelt, MD

Psychiatry

Fred D. Sheftell, MD

Surgery

NEUROSURGERY

Carl Dila, MD

Visiting Physician Staff

Medicine

ANESTHESIOLOGY

Heena Sultan, MD
CARDIOLOGY
Richard Charney, MD
Arthur L. DeAngelis, MD
Leonard J. DiRe, MD
Wilmore B. Finerman, Jr, MD
Paul Gerardi, MD
Craig Hjemdahl-Monsen, MD
Kumar S. Kalapatapu, MD
Robert L. Labarre, MD
Myung-Ho Lee, MD
David B. Messinger, MD
Hershel Ozick, MD
Ronald Preston, MD
Monica M. Reynolds, MD
Edward H. Schuster, MD
Michael M. Silver, MD
Melvin B. Weiss, MD

DERMATOLOGY

Gerald F. Davis, MD
Diane C. Madfes, MD
Elizabeth R. Marsh, MD

FAMILY PRACTICE

Todd M. Friend, DO
Micheline E. Giovani, MD
Robert Samaniego, MD
Howard S. Yudin, MD

GASTROENTEROLOGY

Andrew P. Francella, MD
Alan H. Jaffe, MD

GENERAL MEDICINE

Sandra C. Ang, MD
Annamaria Calleo-Cross, DO
Silvio Ceccarelli, MD
Allen Chodock, MD
Carlon Colker, MD
Ana Patricia Echeverri, MD

Richard S. Gottfried, MD
Antonios A. Katsigiannis, MD
Lawrence S. Kraftowitz, MD
Thomas K. Landau, MD

Myung-Ho Lee, MD
Jay M. Levat, MD
Roger A. Madris, MD
William A. Martimucci, MD

Eliot P. Moshman, MD
Susan A. Park, MD
George W. Pelebecky, Jr, MD
Steven E. Phillips, MD

Carroll A. Rayner, MD
Eileen M. Sacharski, MD
Gary E. Rothbart, MD
Lori Saltzman-Gabelman, MD

Ruth M. Sanchez, MD
Noel H. Seicol, MD
Nitya Sharma, MD
Anna L. Shender, DO, MD
Lambros E. Siderides, MD

Carolyn H. Thompson, MD
Cathrine L. Troy, MD

GYNECOLOGIC-ONCOLOGY

Herbert F. Gretz III, MD
Iris Wertheim, MD

HEMATOLOGY-ONCOLOGY

Stuart P. Feldman, MD
Abraham Mittelman, MD

IMMUNOLOGY-ALLERGY

Noel H. Seicol, MD
NEPHROLOGY
Robert C. Alvis, MD
Iosif Kolbovsky, MD
Anthony F. Korosi, MD

NEUROLOGY

Charisse Litchman, MD
Stewart J. Tepper, MD
Evangelos Xistris, MD

PULMONARY MEDICINE

James J. Doyle, III, MD
Steven M. Meixler, MD
Bruce E. Sherling, MD
Emanuel I. Wurm, DO

Obstetrics & Gynecology

Mark P. Leondires, MD
Robert J. Stiller, MD

Orthopaedics

Russell J. Cavallo, MD
Robert L. Cristofaro, MD
Joseph M. D'Amico, MD
Frank A. DiFazio, MD
Edward V. Gundy, MD
Scott V. Haig, MD

John M. Nelson, MD
Young Don Oh, MD
Rudolph F. Taddonio, MD

Pediatrics

Peter J. Acker, MD
Bharati Banerjee, MD
James T. Belisle, MD
David M. Berkun, MD
Lauren W. Carton, MD
Barbara J. Coven, MD
Maria Luisa De La Morena, MD
John M. Dubaz, MD
Elena E. Gazzola-Kraenzlin, MD
Ben Glassman, MD
Sue Y.E. Hahm, MD

Patricia R. Jorquera, MD
Laura C. Macbeth, MD
Nahid Majd, MD
Wendy A. Proskin, MD
Ester Ramirez-Cepeda, MD

Harry Romanowitz, MD
Richard P. Santarosa, MD
Alan Schragar, MD
Jonathan A. Waxberg, MD
Eugene Wasserman, MD

Pediatric Endocrinology

Noel K. Maclaren, MD

Pediatric Gastroenterology

Mark Glassman, MD

Pediatric Oncology

Judith Marcus, MD
Aaron R. Rausen, MD

Pediatric Pulmonary Medicine

Hossein Sadeghi, MD

Pediatric Surgery

Peter Liebert, MD
William Middlesworth, MD
Jeffrey L. Zitsman, MD

Psychiatry

Michael N. Sarezky, MD

Radiology

Richard J. Lisi, MD

Surgery

GENERAL SURGERY
Steven N. Burger, MD
Caleb K. Charny, MD
Sansern Hastanan, MD
Evan K. Krakovitz, MD

NEUROSURGERY

Cory Rosenstein, MD
Scott L. Simon, MD

OPHTHALMOLOGY

Ameet K. Goyal, MD
Steven C. Greenberg, MD
David Tom, MD

OTOLARYNGOLOGY

Paul D. Gittelman, MD
Carlo P. Honrado, MD
Jeffrey H. Jablon, MD

Habibullah Jamal, MD
Adam D. Schaffner, MD

PLASTIC SURGERY

F. Frederic Khoury, MD
Sandra L. Margoles, MD
Fredric A. Newman, MD
David Passaretti, MD
Rick D. Rosen, MD
John E. Sherman, MD
Jonathan H. Sherwyn, MD
Michael S. Suzman, MD

UROLOGY

Rudy T. Andriani, MD
Jonathan E. Bernie, MD
Judd Boczko, MD
Bryan P. Blair, MD
Robert H. Lovegrove, MD
Richard P. Santarosa, MD
Alan Schragar, MD
Jonathan A. Waxberg, MD

VASCULAR SURGERY

George O. Piccorelli, MD
Kenneth S. Schwartz, MD
Neil S. Weintraub, MD

Consulting Medical Staff

Medicine

CARDIOLOGY

Joseph J. Brennan, MD
Henry S. Cabin, MD
Michael W. Cleman, MD
Jeptha P. Curtis, MD
Frank J. Giordano, MD
Steven E. Pfau, MD
Michael S. Remetz, MD
Mark H. Schoenfeld, MD
John F. Setaro, MD

GENERAL MEDICINE

Kenneth Liegner, MD

GERIATRIC MEDICINE

Barney Spivack, MD

IMMUNOLOGY-ALLERGY

Mitchell R. Lester, MD
Joseph Sproviero, MD

NEUROLOGY

Alan M. Rapoport, MD

NUCLEAR RADIOLOGY

Maria C. Pavlis, MD

PHYSICAL MEDICINE & REHABILITATION

Robert Gabriel, MD

Obstetrics & Gynecology

Joshua A. Copel, MD
Edmund F. Funai, MD
Gad Lavy, MD
Urania Magriples, MD
Maria J. Small, MD

GYNECOLOGIC-ONCOLOGY

Thomas J. Rutherford, MD
Peter Schwartz, MD

Orthopaedics

Edward C. Jones, MD

Pediatrics

PEDIATRIC CARDIOLOGY

Alan H. Friedman, MD
Michael Snyder, MD
Bevin P. Weeks, MD

PEDIATRIC ENDOCRINOLOGY

Myron Genel, MD

PEDIATRIC GENETICS

Margretta R. Seashore, MD

PEDIATRIC ORTHOPAEDIC

Benjamin D. Roye, MD
David P. Roye, Jr, MD

PEDIATRIC PULMONARY MEDICINE

Alia Bazy-Asaad, MD
Marie E. Egan, MD
Prina Weiss, MD

PEDIATRIC SURGERY

Leif O. Holgersen, MD

Psychiatry

James G. Katis, MD
John Tamerin, MD

Radiology

Anjali Agrawal, MD
Aditya Daftary, MD
Arjun Kalyanpur, MD
Sanjay Kamath, MD
Barry J. Kanner, MD

Surgery

OPHTHALMOLOGY

George Florakis, MD
Peter Liggett, MD
Philip J. Piro, MD
Richard Weber, MD

PLASTIC SURGERY

Harold Gewirtz, MD
Henry M. Spinelli, MD

UROLOGY

Carl A. Olsson, MD

VASCULAR

Robert J. Mulcare, MD

Emeritus Medical Staff

Cardiology

Bartel R. Crisafi, Sr, MD

Emergency Medicine

Robert N. Kitchen, MD

Hematology Oncology

Arthur H. Rosenberg, MD

Medicine

GENERAL MEDICINE

Peter A. Arturi, MD
Nicholas Kopeloff, MD
Henry E. Markley, MD
John Prunier, MD

IMMUNOLOGY-ALLERGY

Anthony P. Redmond, MD

Neurology

Walter A. Camp, MD
Thomas E. Conley, MD

Obstetrics & Gynecology

William S. Nelson, MD

Orthopaedics

Thomas D. Rodda, MD

Pediatrics

John I. Larkin, MD

Psychiatry

Sidney H. Hart, MD

Radiology

Forbes Delany, MD

Surgery

Ervin Hanson, MD
John C. Wilsey, MD

Honorary Medical Staff

Anesthesiology

Han T. Chiang, MD
Yen T. Lin, MD
Amedeo J. Losito, MD

Emergency Medicine

Robert C. Wheeler, MD

Medicine

Edith Beck, MD
John Bolton, MD
Wayne T. Branom, Jr, MD
Frederick J. Christie, MD
Stephen Derkash, MD

PLASTIC SURGERY

David Fogel, MD
James W. Innes, MD

Norman Keller, MD
Peter H. Maher, MD

Marc E. Newberg, MD

James W. Wood, MD

Obstetrics & Gynecology

Joseph G. Bisceglia, MD
J. Brooks Hoffman, MD
Michael Langan, MD
Joseph Montimurro, MD
Robert H. Wyatt, MD

Orthopaedics

James N. Worcester, MD

Pathology

Daniel W. Benninghoff, MD

Pediatrics

Edmund F. Hecklau, MD

Psychiatry

William Kenny, MD
Harold S. Wright, MD

Radiology

Herbert von Gal, MD

Surgery

Milton Campbell, MD
Rama Coomaraswamy, MD
John R. Finlay, MD
John W. Gerster, MD
William Hillis, MD

Edwin H. Kent, MD

Timothy J. Nolan, MD

Joe Watts, MD

Outpatient Dental Staff

Stuart R. Epstein, DDS*

Chief of Outpatient Dental Staff

General Dentistry

Robert L. Ailleo, DMD
Barbara J. Devine, DMD
Robert Dinmore, DMD
Robert S. Dustin, Jr, DMD
Michael Gentile, DDS
Thomas F. Gorman, DDS
Richard A. Greenberg, DDS
Ira A. Honig, DDS
Anthony Ilardo, DDS
Michael J. Mack, DDS
Thomas M. Ohlson, DDS
Ehud Oppenheimer, DMD
Donald A. Pogoda, DMD
John J. Schinto, III, DDS
Stephen J. Scott, DDS
Dennie L. Simons, Jr, DDS
A.Vandiveer Strait, DDS
Mark Sutton, DDS
Kenneth B. Temple, DDS
David T. Thibault, DMD
Douglas M. Trepp, DMD
Robert A. Wachen, DDS

**Attending Dental Staff*

Philip J. Bauer, DMD

Alan H. Brugg, DMD

Ivan K. Weinstein, DDS

Oral Surgery

Robert A. Aslanian, DDS*
Michele Bergen-Shapiro, DMD, MD
Walter Bloes, DMD*
Steven M. Brody, DDS*
Philip F.T. Pacelli, DMD, MD*
Joseph F. Wallace, DDS*
Thomas B. Wilson, DDS, MD
Anasthasia Zarakiotis, DDS

Orthodontia

Scott L. Kesselman, DDS
Albert J. Repicci, DMD
Rosemary Ryan, DMD
Gary Wong, DMD

Pedodontia

Frederick Berlin, DDS
Angelo Milazzo, DDS
Sangeeta Sethi, DDS

Periodontia

Stuart R. Epstein, DDS*
Vito B. Federici, DMD*
Eman J. Traynor, DMD

Prosthodontia

Venetia S. Kyriakos, DMD
Joel M. Leon, DDS
Richard D. Miller, DDS*

Honorary Dental Staff

Horace Bassett, DDS

Joseph P. Coleman, DDS

Earle F. Cote, DDS

Robert S. Dustin, Sr, DDS

Thomas E. Hannon, DDS

Charles W. Jensen, Jr, DDS

Henry W. Juan, Jr, DMD

Harry G. Leventyn, DDS

Wallace Maynard, DDS

Theodore L. Merolla, DDS

John J. Murray, DDS

Richard D. O'Leary, DDS

Arthur Ribak, DDS

John Schinto, Sr, DDS

Charles Slagle, DDS

George Smith, Jr, DDS

Ward W. Tracy, DDS

Harold Trepp, DDS

James J. White, DDS



It is our great pleasure to acknowledge with deep gratitude the leadership role assumed by the members of the Chairman's Council, the Elizabeth Brownell Society, and the Thomas J. Watson, Jr. Society in support of the 2006 Annual Fund (October 1, 2005 - September 30, 2006). Their dedication, commitment and generosity have helped Greenwich Hospital to achieve its mission to provide the highest level of healthcare to all we serve.

The Chairman's Council

Anson M. Beard, Jr.
 Mr. and Mrs. Edward H. Bragg, Jr.
 Mr. and Mrs. Frank A. Corvino
 Mr. and Mrs. Marvin H. Davidson
 Mr. and Mrs. Michael E. Gellert
 Mr. and Mrs. Robert B. Goergen
 Mr. and Mrs. Edmund A. Hajim
 Mr. and Mrs. Donald J. Kirk
 Mr. and Mrs. Roger M. Lynch
 Mr. and Mrs. Peter L. Malkin
 Mr. and Mrs. Arthur Martinez
 Mr. and Mrs. James M. McTaggart
 Mr. and Mrs. John J. Meakem, Jr.
 Mr. and Mrs. Thomas D. O'Malley
 Mr. and Mrs. William J. Oppenheim
 Mr. and Mrs. Richard R. Pivrotto
 Mr. and Mrs. Robert M. Rosencrans
 Mr. and Mrs. Charles M. Royce
 Mr. and Mrs. Michael H. Sherman
 Mr. and Mrs. Theodore R. Stanley
 Mr. and Mrs. Barry S. Sternlicht
 Mr. and Mrs. David W. Wallace
 Mr. and Mrs. Bruce L. Warwick
 Mrs. John L. Weinberg
 Mr. and Mrs. Malcolm H. Wiener
 Mr. and Mrs. John H. T. Wilson

The Elizabeth Brownell Society

Mrs. Louis H. Aborn
 Mr. and Mrs. John F. Ball
 Mrs. Frank J. Coyle
 Mr. and Mrs. Larry N. Feinberg
 Mr. and Mrs. Carl S. Forsythe III
 Mr. and Mrs. Clifton C. Garvin, Jr.
 Mrs. Richard L. Gelb
 Mr. and Mrs. J. Christopher Hoeffel
 The Fritz and Adelaide Kauffmann Foundation, Inc.
 Barbara G. Klein
 Mr. and Mrs. Alexander P. Lynch
 Mr. and Mrs. Fred Nives
 Mrs. Langdon Van Norden
 Mr. and Mrs. William N. Vaughan
 Dr. and Mrs. John C. Wilsey

The Thomas J. Watson, Jr. Society

Mrs. William A. Barbe
 Elise D. Bickford
 Judith L. Biggs
 Mr. and Mrs. Joseph E. Brooks
 Mr. and Mrs. William H. Browne
 Mr. and Mrs. Robert G. Burton
 Mr. and Mrs. Robert T. Butler
 Marshall Clark
 Mr. and Mrs. David Craver
 Mr. and Mrs. Frederick M. Danziger
 Mr. and Mrs. Michael F. Delfino
 Mr. and Mrs. Steven A. Denning
 Mr. and Mrs. Alan S. Englander
 Helen Frankenthaler
 Mr. and Mrs. George J. Gillespie III
 Thomas H. Gillespie, Jr.
 Anthony A. Girardi
 Rose A. Girardi
 L. Jay Grossman
 Mr. and Mrs. Richard A. Grossman
 Anne and Bill Harrison
 Mr. and Mrs. Robert Julius
 Mr. and Mrs. Irwin Kallman
 Melvyn Kaufman
 Mr. and Mrs. John M. Kingery
 Mr. and Mrs. John A. Kirk
 Margreth E. Knehans
 Mr. and Mrs. Frank G. Lyon
 Mr. and Mrs. Stephen Mandel, Jr.
 Mrs. Robert R. Mathews
 Doris A. Meyer Charitable Trust
 Mr. and Mrs. Gerrish H. Milliken, Jr.
 Norman M. Morris Foundation
 Mr. and Mrs. Lester S. Morse, Jr.
 R. Bruce Mosbacher
 Thomas P. Peterffy
 Ann Pinkerton Charitable Trust
 Mr. and Mrs. Thomas W. Smith
 Mrs. Thomas M. Taylor
 R. T. Vanderbilt Trust
 Mr. and Mrs. Edgar Wachenheim III
 Mr. and Mrs. David N. Webb
 Elizabeth D. Wick
 Veva Miller Wood

The contributions of Greenwich Hospital's many loyal donors help to make possible vital hospital services, bring medical and technological advances to Greenwich, and provide a broad range of educational and wellness programs to help us all lead healthier lives. Greenwich Hospital extends sincere gratitude to the following donors who contributed gifts of \$1,000 or more to the Annual Fund and the Capital Campaign. Although some of these gifts are part of larger multi-year pledges, the figures below represent those dollars received during the period October 1, 2005 to September 30, 2006.

\$1,000,000.00 +

Mr. and Mrs. Carl Bennett
Mrs. Henry J. Gaisman
Edward John Noble Foundation, Inc.

\$500,000.00 - \$999,999

Mr. and Mrs. William R. Berkley
Mr. and Mrs. William J. Bresnan
Mr. and Mrs. Steven A. Cohen
Jean and David W. Wallace

\$250,000.00 - \$499,999

Anonymous
W. R. Berkley Corporation
David H. & Carol Feinberg
Foundation
Greenwich Hospital Auxiliary
Sandra and John Wilson

\$100,000 - \$249,999

Anonymous
Maria and Jim Allwin
Estate of Edna M. Anderson
The Family of the late Sanna
and Victor Borge
Mr. and Mrs. Craig M. Cogut
Mr. and Mrs. John R. Frank
Pam and Bob Goergen
Mr. and Mrs. John W. Laibe
Elizabeth and Arthur Martinez
Mr. and Mrs. Thomas D. O'Malley,
The O'Malley Foundation
The Opatrny Family Foundation
Mr. and Mrs. Paul E. Raether
William C. Sharp Trust Agreement
Mr. and Mrs. John L. Townsend III
Mrs. Langdon Van Norden
Rosemarie and Gary Wendt
Mr. and Mrs. Malcolm H. Wiener

\$50,000 - \$99,999

Mr. and Mrs. Clifford S. Asness
Mr. and Mrs. Richard A. Axilrod
Mr. and Mrs. Walter Burke
Mr. and Mrs. W. Robert Dahl, Jr.
Mr. and Mrs. Marvin H. Davidson
Hilda and Preston Davis Foundation
Mr. and Mrs. Steven A. Denning
The Hearst Corporation
Mrs. William Higgins
Mr. and Mrs. John Klingenstein
Mr. and Mrs. Christopher J. Lacroix
Tammy and Jay Levine and Family
Susan E. Lynch
Mr. and Mrs. Peter L. Malkin
Estate of Allen F. Maulsby
L. Thomas Melly Foundation
Mr. and Mrs. Henry S. Miller

Estate of Anya Naylor
The Noel Family Foundation
Mr. and Mrs. William J. Oppenheim
Pepsico, Inc.
RBS Greenwich Capital
Mr. and Mrs. Theodore R. Stanley

\$25,000 - \$49,999

Anonymous
Anson M. Beard, Jr.
Breast Cancer Alliance, Inc.
Cenci Foundation
Maryann and Jay Chai
Citigroup Business Services
Marshall Clark
Everett Fisher
Hon. Livvy Floren and
Mr. Douglas C. Floren
Mr. and Mrs. Richard S. Fuld, Jr.
Greenwich Anesthesiology
Associates, P.C.
Mr. and Mrs. Richard A. Grossman
Mr. and Mrs. Joseph W. Hill II
Mr. and Mrs. Timothy A. Hultquist
Mr. and Mrs. Wm. Mitchell
Jennings, Jr.
Mr. and Mrs. Paul Tudor Jones II
Mr. and Mrs. Raymond E. Joslin
Penny and Peter Leibowitz
Lexus of Greenwich
Mr. and Mrs. Alexander P. Lynch
Sylvia and Leonard Marx
Diane and Jack Meakem
Marion Moore Foundation
Mr. and Mrs. Daniel L. Mosley
Nestle Waters North America
Mr. and Mrs. Edward Netter
Ruth and Harold Newman
The Generoso Pope Foundation
Mr. and Mrs. Stanley Rand III
Mr. and Mrs. Walter Raquet
William L. Richter
Susan and Gary Rosenbach
Margie and Bob Rosencrans
Dr. and Mrs. Raymond R. Sackler
Mr. and Mrs. Robert L. Seclert
Ann and Michael Sherman
Mr. and Mrs. Barry S. Sternlicht
S. Donald Sussman
Tudor Foundation, Inc.
Mr. and Mrs. Adalbert
Von Gontard, Jr.
Mr. and Mrs. Bruce Warwick
Estate of Mrs. Thomas J. Watson, Jr.
Mrs. John L. Weinberg
Mr. and Mrs. J. Fred Weintz, Jr.
Wendy and Peter Wright

\$10,000 - \$24,999

Anonymous (5)
The Aborn Foundation
Estate of Mary S. Bartram
Jane and Alan Batkin
Betsy Bernstein
Sara and Geoff Bible
Mr. and Mrs. A. MacDonald Caputo
Rona and Jeffrey Citrin
Mary Anne and J. Michael Cook
Mr. and Mrs. Stephen Corman
Mr. and Mrs. Frank A. Corvino
Mrs. Frank J. Coyle
Carol and George Crapple
Mr. and Mrs. Raymond T. Dalio
Gary and Ellen Davis Family
Foundation
Mr. and Mrs. Nathaniel B. Day
Sarah K. de Coizart Article
TENTH Perpetual Charitable Trust
Michael and Mary Delfino
The Richard D. Donchian Foundation
Elizabeth Elser Doolittle
Charitable Trusts
Dotsie and Bob Doran
Mr. and Mrs. John M. Duryea
Mr. and Mrs. William A. Endico
Cindy and Larry Feinberg
Barbara H. Fisher
Mr. and Mrs. Lawrence Flinn, Jr.
Mr. and Mrs. L. Scott Frantz
The Fuscone Family Foundation
Gabelli Asset Management Co.
Mario Gabelli and Regina Pitaro
GE Foundation
Lawrence M. Gelb Foundation, Inc.
Mr. and Mrs. Peter L. Getz
Hon. Lile Gibbons and
Mr. John Gibbons
Mr. and Mrs. Bruno J. Gioffre
The Gladstein Mullen Family gift
Estate of Irene Grant
Greenwich Pathology Associates
Mr. and Mrs. Edmund A. Hajim
Anne and Bill Harrison
Ellen and Christopher Hoeffel
Jeanet and John Irwin
Dr. and Mrs. Jeffrey R. Jay
Allison and Warren Kanders
The Fritz and Adelaide Kauffmann
Foundation, Inc.
Mimi and Don Kirk
Ruth and Seymour Klein Foundation
Mr. and Mrs. Philip B. Korsant
Mr. and Mrs. Edward S. Lampert
Shari and Spencer Lampert
Mr. and Mrs. Charles R. Lee
The Lehrman Institute
Mr. and Mrs. James M. Li

Mr. and Mrs. Roger M. Lynch
Mr. and Mrs. Edward F. McLaughlin
Mr. and Mrs. Frank A. Miller
Mr. and Mrs. Karlheinz Muhr
Estate of Ruth T. Murdoch
Mr. and Mrs. Thomas J. Neff
Donna and Fred Nives
Northern Trust
Mr. and Mrs. Lucio A. Noto
Nancy and Morris W. Offit
Beverly and Peter Orthwein
Estates of Jean R. Peacock
and Alexander R. Peacock
Mr. and Mrs. Richard R. Pivrotto
The Putnam Trust Company
Mr. and Mrs. Geraldo Rivera
Mr. and Mrs. John L. Roach
Mr. and Mrs. Charles M. Royce
Bonnie and Peter Sacerdote
Saks Fifth Avenue
Mr. and Mrs. Charles W. Santoro
Sara Lee and Axel Schupf
Mr. and Mrs. John C. Sites, Jr.
Mr. and Mrs. Scott M. Smith
Mr. and Mrs. Andrew Smoller
Spears Grisanti & Brown LLC
Turner Construction Company
Kerry and Charles Tyler
U.S. Trust Company New York
U.S. Trust Company of Connecticut
Mr. and Mrs. Roger M. Vasey
Mr. and Mrs. William N. Vaughan
Wachovia Foundation
Margie and Bruce Warwick
Lucinda Watson
Irene and Carl Zelinsky
Zenkel Foundation

\$5,000 - \$9,999

Anonymous (4)
Mr. and Mrs. Nathan R. Allen, Jr.
Dr. Vicki Altmeyer and
Allison L. Reams
Mr. and Mrs. Bradley D. Asness
Mr. and Mrs. Joseph Baratta
Mrs. William A. Barbe
Mr. and Mrs. Cliff Berger
Elise D. Bickford
Lynda and Charles Biggs
Judith L. Biggs
Mr. and Mrs. Robert D. Birnbaum
Alice and Joseph Brooks
Mr. and Mrs. Robert G. Burton
Mr. and Mrs. Robert T. Butler
Mr. and Mrs. A. Martin Cannon
Mr. and Mrs. Howard L. Clark, Jr.
Jane F. Condon and
Kenneth G. Bartels
Katherine Cowdin, Inc.

Mr. and Mrs. James B. Cowperthwait
Vicki and David Craver
Lucy and Mike Danziger
Robert A. Elmo
Linda and Alan Englander
Mr. and Mrs. William L. Farrell
Dr. Alexis E. Finlay
Mr. and Mrs. Lawrence Foley
Helen Frankenthaler
Scott J. Freidheim
Stephen C. Freidheim
Dr. Michele and
Dr. Henry Gasiorowski
Mr. and Mrs. John A. Georges
Louis V. Gerstner, Jr. Foundation
Dr. and Mrs. Zohar Ghogawala
Marlene and Alan Gilbert
Mr. and Mrs. George J. Gillespie III
Anthony A. Girardi
Rose A. Girardi
Mr. and Mrs. Charles B. Goldstuck
The Graf Family
Mr. and Mrs. Herbert A. Granath
Laura M. and Peter T. Grauer
Foundation
Dr. and Mrs. Stephen R. Gray
Greenwich Chaplaincy Services
Estate of John S. Griswold, Sr.
Nora and Madison Grose
L. Jay Grossman
Mr. and Mrs. Thomas M. Hamilton
Dr. and Mrs. William H. Hampton
Kristy and Robert Harteveltd
Mr. and Mrs. Carlos M. Hernandez
Mr. and Mrs. Alexander E. Jackson
Anne F. Jeffery
Mr. and Mrs. David A. Juge
Mr. and Mrs. Robert Julius
Mr. and Mrs. Irwin Kallman
Melvyn Kaufman
Mr. and Mrs. Richard M. Kessler
Mr. and Mrs. John M. Kingery
Fiona and Alex Kirk
Patricia E. Kopenhaver, D.P.M.
Mr. and Mrs. Richard L. Kramer
Mr. and Mrs. F. Scott Kulok
Leah and Alain Lebec
Mr. and Mrs. Richard T. Lewis
Lubin Family Foundation
Mr. and Mrs. Frank G. Lyon
Mr. and Mrs. Wayne L. Maggin
Joanne and Michael Masin
The Charles A. Mastronardi
Foundation
Mrs. Robert R. Mathews
Mr. and Mrs. Andrew A. McAleer
Mr. and Mrs. W. Wallace
McDowell, Jr.
Nancy King Mettler
Doris A. Meyer Charitable Trust
Mr. and Mrs. Robert H. Meyerhoff

The Milliken Foundation
Norman M. Morris Foundation
Mr. and Mrs. Lester S. Morse, Jr.
R. Bruce Mosbacher, Nancy Ditz
and Mrs. Emil Mosbacher, Jr.
Sheila and James Mossman
Mr. and Mrs. Stephen R. Munger
Suzanne and Thomas Murphy
Mr. and Ms. Richard A. Ng-Yow
Senator and Mrs.
William H. Nickerson
Mr. and Mrs. Charles J. Persico
Thomas P. Peterffy
Imelda and Andras Petery
Ann Pinkerton Charitable Trust
Mr. and Mrs. Arthur J. Reimers III
Mr. and Mrs. Richard P. Richman
Nancy and Robert Risman
Mr. and Mrs. D. Paul Rittmaster
Mr. and Mrs. Clifton S. Robbins
Mr. and Mrs. Gregory T. Rogers
Dr. and Mrs. Arthur H. Rosenberg
Mr. and Mrs. Raymond B. Rudy
Richard Salomon Family
Foundation, Inc.
Roy Sambrook
Carol and Bob Santora
Mr. and Mrs. Kenneth Schlechter
Dr. and Mrs. Alan E. Selkin
Isabelle Sherlock
Mr. and Mrs. Thomas W. Smith
Mr. and Mrs. John E. Stauffer
Mrs. Thomas M. Taylor
Dr. Elizabeth and Dr.
Stylianios Theofanidis
United Way Tri-State
R. T. Vanderbilt Trust
Dr. and Mrs. Richard H. Velaj
Sue and Ed Wachenheim
Mr. and Mrs. David N. Webb
Mr. and Mrs. Roger L. Werner, Jr.
Lynne Wheat
Dr. and Mrs. John C. Wiley
Mr. and Mrs. Curtis Wood
Veva Miller Wood
Mr. and Mrs. Robert Zimmer

\$1,000 - \$4,999

Anonymous (11)
Mr. and Mrs. Sargent Aborn
The Advocate Greenwich Time
Mr. and Mrs. Randi A. Aitken
Allura Day Spa & Salon
Mr. and Mrs. William E. Andruss, Jr.
Dr. and Mrs. Darrick E. Antell
Mr. and Mrs. Alfonso R. Auz
Mrs. H. Nash Babcock
Mr. and Mrs. George W. Baker, Jr.
Bank of America Private Bank
Dr. and Mrs. Richard D. Banyard
Mr. and Mrs. Charles F. Barber

Mr. and Mrs. John D. Barrett II
Mr. and Mrs. Gary E. Bashian
Mr. and Mrs. Howard Benedikt
Mr. and Mrs. Stuart Berni,
Arielle Berni, Shael Berni
Best & Co.
Mrs. Edward M. Bigler
Kjestine and Peter Bijur
Mr. and Mrs. John P. Birkelund
Susan and Eliot Black
Kim and David Blank
Mr. and Mrs. Charles S. Bloom
Mr. and Mrs. Ralph Bolognese
Josephine C. Borchetta
Mr. and Mrs. Eric Borgstrom
Elizabeth and David Boutry
Margaret and Edward Bragg
Mr. and Mrs. Andrew F. Braver
Peg and Jack Brewer
Mr. and Mrs. Robert E. Bridges
Susanne Brody and Gary Cohen
Dr. and Mrs. Andrew Bronin
Dr. and Mrs. Kevin R. Brown
Mr. and Mrs. Jay J. Buck
Mr. and Mrs. Steven P. Buffone
Mr. and Mrs. David D. Burrows
Janice W. Calloway
Mr. and Mrs. Dort A. Cameron III
Mr. and Mrs. John Joel G. Cameron
Judy and Tony Evnin
Edith B. Fehr
Mr. and Mrs. Gregg J. Felton
Ferrell Law
Fesjian Foundation
Mr. and Mrs. Michael L. Finkelstein
Cathy and Harold Finn
Mr. and Mrs. David R. Finn
Dr. and Mrs. Amory J. Fiore
Mrs. Ralph Fioretti
Mr. and Mrs. Andrew Fisher
F. Richards Ford III
Mr. and Mrs. William E. Ford III
Sylvester M. Foster Foundation, Inc.
Mr. and Mrs. William D. Fraad
Mr. and Mrs. Daniel R. Frank
The Andrew J. and Anita G. Frankel
Family Foundation
Mr. and Mrs. Michael J. Freeburg
Mr. and Mrs. John R. French
Margaret W. Frey
Daniel M. Friedenber
Mr. and Mrs. Mark A. Friedman
Mr. and Mrs. Quinton J. Friesen
Mr. and Mrs. George N. Fugelsang
Susan Fuller
Mr. and Mrs. Vincent E. Gallagher, Sr.
Muriel and John Gantz
Mr. and Mrs. J. Gordon Garrett
Paula and Don Gaston
Mr. and Mrs. Joseph D. Gatto
Mr. and Mrs. Michael E. Gellert

Mrs. William L. Culbert III
Daphne Seybolt Culpeper
Memorial Foundation, Inc.
Mr. and Mrs. John R. Curtin
Mr. and Mrs. Anthony F. Daddino
Mr. and Mrs. David M. Darst
Day, Berry & Howard LLP
Dr. Christina A. Del Pin and
Mr. Gary Cella
Dr. Leslie A. Donovan and
Dr. Paul J. Apostolides
Jean Doyen de Montailou
and Michael A. Kovner
Mr. and Mrs. F. Burke Dempsey
Mr. and Mrs. Ralph D. DeNunzio
Mr. and Mrs. William Deutsch
Deutsche Bank Americas Foundation
Mr. and Mrs. Dudley H.
Dommerich, Jr.
Shelby Drew
Mr. and Mrs. Ronald N. Dubin
Mr. and Mrs. Louis D. Duff
Mr. and Mrs. William B. Duff
Mr. and Mrs. Kenneth C. Duffy
Mr. and Mrs. H. Park Duncan
Dolores M. Edgar
Mr. and Mrs. Burt R. Ehrlich
Dr. and Mrs. David D. Evans
Mr. and Mrs. William H. Evans
Judy and Tony Evnin
Edith B. Fehr
Mr. and Mrs. Gregg J. Felton
Ferrell Law
Fesjian Foundation
Mr. and Mrs. Michael L. Finkelstein
Cathy and Harold Finn
Mr. and Mrs. David R. Finn
Dr. and Mrs. Amory J. Fiore
Mrs. Ralph Fioretti
Mr. and Mrs. Andrew Fisher
F. Richards Ford III
Mr. and Mrs. William E. Ford III
Sylvester M. Foster Foundation, Inc.
Mr. and Mrs. William D. Fraad
Mr. and Mrs. Daniel R. Frank
The Andrew J. and Anita G. Frankel
Family Foundation
Mr. and Mrs. Michael J. Freeburg
Mr. and Mrs. John R. French
Margaret W. Frey
Daniel M. Friedenber
Mr. and Mrs. Mark A. Friedman
Mr. and Mrs. Quinton J. Friesen
Mr. and Mrs. George N. Fugelsang
Susan Fuller
Mr. and Mrs. Vincent E. Gallagher, Sr.
Muriel and John Gantz
Mr. and Mrs. J. Gordon Garrett
Paula and Don Gaston
Mr. and Mrs. Joseph D. Gatto
Mr. and Mrs. Michael E. Gellert

Mr. and Mrs. Paul Genovese
 Dr. John W. Gerster
 Mr. and Mrs. Anthony J. Giammalva
 Mr. and Mrs. Robert E. Glanville
 Goodale Associates
 Mr. and Mrs. Sheldon M. Gordon
 Douglas H. Greeff
 Karyn and Bruce Greenwald
 Greenwich Nursing & Health Care Registry, LLC
 Greenwich Time
 Mr. and Mrs. Peter G. Grimm
 Mr. and Mrs. Clifford Grodd
 Hampton Designer Showhouse
 Geoffrey R. Handler
 Mr. and Mrs. James D. Hann
 Marilyn and Richard Harmonay
 Mr. and Mrs. Thomas J. Harrington
 The Hascoe Family Foundation
 Mr. and Mrs. Thomas E. Hassen
 Mr. and Mrs. Christian Haub
 Dr. Lynne Haven and
 Mr. Paul L. Rinaldi
 Mr. and Mrs. Charles A. Heibold, Jr.
 Heibold Foundation
 Mary Esther Heist
 Jane A. Henson
 Mr. and Mrs. John S. Herold
 Mr. and Mrs. Melvin R. Hertzog
 Barbara Higgins
 Mr. and Mrs. Sol N. Himmelman
 Dr. and Mrs. Steven E. Hindman
 Mr. and Mrs. Peter A. Hinrichs
 Carol and Burton Hoffman
 Mr. and Mrs. Edward L. Hoffman, Jr.
 Mr. and Mrs. Sherman R. Hotchkiss
 Mr. and Mrs. Brian K. Hurst
 Initiative Worldwide
 Mr. and Mrs. George M. James
 Suzanne and David Jarvis
 Rona and Lee Javitch
 Mr. and Mrs. Jeffrey H. Jennings
 Charles W. Johnson
 Mrs. F. Lincoln Johnson
 The Howard Johnson Foundation
 Nicola Johnson
 Dr. and Mrs. Stephen Jones
 Lisa and Michael Josephson
 The Jurkowitz Family
 Dorothea V. Karrel
 Katten Muchin Zavis Rosenman
 Dr. and Mrs. Brian F. Kavanagh
 Mr. and Mrs. Paul J. Keeler, Jr.
 Thomas N. Kellogg
 Brian C. Kelly
 Mr. and Mrs. Matthew Kelly
 Mr. and Mrs. Lawrence Kendall
 Mr. and Mrs. Kevin B. Kimberlin
 Mr. and Mrs. John M. Kingsley, Jr.
 Mr. and Mrs. James E. Knight

Mr. and Mrs. Douglas R. Korn
 Dr. and Mrs. Arnold B. Korval
 Richard Kotz
 Mr. and Mrs. Brian Kwait
 Melissa Lamkin
 Faith Larsen
 Mrs. Bernard J. Lasker
 Dr. Linda LaTrenta
 Mr. and Mrs. Larry J. Lawrence
 Dr. and Mrs. Alan I. Lebowitz
 Mr. and Mrs. Patrick Le Breton
 Dr. M. Sung Lee
 Dr. Modestus Lee and Dr. Laiming Yu
 Dr. Myung-Ho and Dr. Sunhee Lee
 Mr. and Mrs. Clement J. Lepoutre
 Maryse L. Lepoutrepostlewaite
 Dr. and Mrs. Richard B. Lipton
 Mr. and Mrs. Angus C. Littlejohn, Jr.
 Jane Cato Loughlin
 Rose P. Lynch and James A. Torrey
 Jacqueline MacLeod and Brian Lippey
 Dr. Diane C. Madfes
 and Mr. Jason L. Madfes
 Mr. and Mrs. Michael T. Mahaffy
 Dr. and Mrs. Suresh Mandava
 Sally and Tony Mann
 Juliet F. Marillonnet
 A. Michael Marino
 Lisa and Rob Martin
 Mr. and Mrs. Robert H. Masson
 Harriet and David Mazer
 Anthony P. Mazza
 Mr. and Mrs. Alexander McAree
 Mr. and Mrs. Philip H. McCaull
 Mrs. George W. McClellan
 Robert G. McClellan, Jr.
 Mr. and Mrs. John E. McDermott
 Mr. and Mrs. Michael McKeever
 Cheryl McMahon
 Mr. and Mrs. Vincent McMahan
 Adelaide P. McManus
 Mr. and Mrs. Peter F. McSpadden
 Polly and Jim McTaggart
 Medi-Rec Foundation
 Mr. and Mrs. Phillip J. Meek
 The Mendell Family Fund, Inc.
 Lore and Frank Metzger
 Mr. and Mrs. Herbert M. Meyer
 Joan and Robert Meyer
 Mrs. J. C. Meyer, Jr.
 Mrs. Frank V. Mignogna
 Iris H. Miller
 Mr. and Mrs. John Milne
 Mr. and Mrs. Anthony W. Monick, Jr.
 Mr. and Mrs. Robert E. Moore
 Muriel and Paul Morigi
 Mr. and Mrs. Michael E. Morrill
 Mr. and Mrs. Thomas C. Morrison
 Jeffrey Mullins
 David M. Murphy

Christy and Tom Murphy
 Mr. and Mrs. W. Stephen Murray
 Mr. and Mrs. Ronald N. Napoli
 National Safety Council
 Mr. and Mrs. Peter J. Neckles
 Mr. and Mrs. Don H. Nelson
 Mr. and Mrs. Jeffrey G. Neuberth
 New England Brokerage Co.
 Mr. and Mrs. Charles F. Niemeth
 Mr. and Mrs. Walter P. Noonan
 Nurses Alumnae of the
 Greenwich Hospital Assoc. Inc.
 Mr. and Mrs. Christopher J. O'Brien
 Old Oaks Foundation, Inc.
 Orthopaedic & Neurological
 Surgery Specialists
 Mr. and Mrs. Bart Osman
 Shonu and Vinay Pande
 Mrs. Peter E. Paris
 Nike and Tom Passios
 Mr. and Mrs. Leland B. Paton
 Patriot National Bank
 Mr. and Mrs. Peter S. Pauley
 Mr. and Mrs. David R. Peasback
 Mr. and Mrs. Christopher Pedlow
 Dr. and Mrs. Thomas Pellechi
 Mr. and Mrs. James J. Pinto
 Jennifer Pivrotto
 The Plaut Family
 J. Pocker & Son
 Mr. and Mrs. David Polak
 Mr. and Mrs. David P. Polaski
 Catherine M. Pope
 Porricelli's Food Mart, Inc.
 Heather M. Porter
 Mr. and Mrs. Philip C. Potter, Jr.
 Dr. Hollis G. and Dr.
 William S. Potter
 Mr. and Mrs. William H. Pratt
 Mr. and Mrs. Andrew Prozes
 Dr. Debra L. Pruzan and
 Dr. Michael R. Clain
 Psychists, Inc.
 Mr. and Mrs. Richard Raymond
 Razooks, Inc.
 Mr. and Mrs. Mark Reichenbaum
 Mr. and Mrs. Daniel M. Reid
 Mr. and Mrs. Charles H. Revson, Jr.
 Ralph P Rigby
 Vera B. Rogers
 Mr. and Mrs. Bruce M. Rose
 Mr. and Mrs. Jonathan Rosenthal
 Mrs. Tyge E. Rothe
 RSM McGladrey, Inc.
 Meg and Stewart Russell
 Loraine M. Salerno
 Mr. and Mrs. Jesse F. Sammis III
 Patricia and Bruno Santonocito
 Julia T. Santry
 Mr. and Mrs. Ladislav B. Sark

Mr. and Mrs. Peter H. Savitz
 John J. Sayers
 Ethel Schaper
 Ann and Thomas Scheuer
 Mr. and Mrs. John E. Schmelzter III
 Mrs. Herman J. Schmidt
 Lorraine Schneidman
 Mr. and Mrs. Robert W. Schubert
 Dr. Miriam and Dr. Charles B. Seelig
 Sempra Energy Trading Corporation
 The Sexton Family Foundation
 Mr. and Mrs. Eugene B. Shanks, Jr.
 Mrs. Arthur E. Shapiro
 Mr. and Mrs. John C. Shaw
 Nancy and Tom Shepard
 Dr. Frederick E. and Mrs.
 Lora S. Siefert
 Marlys and Edward Silver
 Mr. and Mrs. Jed Simmons
 The Simmons Family
 Deborah and Alan Simon
 Mr. and Mrs. William E. Simon
 Bradford D. Smith
 Linda K. Smith
 Muriel B. Smith
 Mr. and Mrs. Seymour Sobel
 Mr. and Mrs. Richard G. Spielmann
 Mr. and Mrs. Paul M. Stafford
 Stamford Tent & Party Rental
 Dr. and Mrs. Robert M. Stark
 Mr. and Mrs. Clifford W. Stober
 Mrs. Robert G. Stone, Jr.
 Mr. and Mrs. Hans G. Storr
 Mr. and Mrs. Scott M. Stuart
 Dr. Rosa F. and Dr. Scott Sullivan
 Anne Swallow
 Mr. and Mrs. Steven D. Swift
 Mr. and Mrs. Jackson P. Tai
 Vicki and Harold Tananbaum
 Amanda and Daniel Tapiero
 Temple Sholom
 Mr. and Mrs. Petr A. Thorson
 Mr. and Mrs. Jean Paul Tisseyre
 Toyota North
 Mr. and Mrs. Ulrik Trampe
 Trans-Continental Credit
 & Collection Corp.
 Tudor Investment Corp.
 Mr. and Mrs. Igor Tulchinsky
 John Twomey
 Dr. and Mrs. George A. Ubogy
 United Way of Greenwich, Inc.
 United Way Of New York City
 Michael J. Urfirer
 Dr. and Mrs. Chetan Vaid
 Mrs. Francis H. Van Deventer
 Mr. and Mrs. Clark R. Van Nostrand
 Vanguard Products Corporation
 The Vanneck-Bailey Foundation
 Dr. Mary and Mr. David Versfelt

Dr. Caterina Violi and
 Dr. Richard Baranello
 Dr. Elaine Waldo
 Mr. and Mrs. Mort Walker
 Joan M. Warburg
 Dr. Barbara A. Ward and
 Mr. John Andrews
 Watling Foundation, Inc.
 Mr. and Mrs. Thomas Weber
 Mr. and Mrs. Alan N. Weeden
 Mr. and Mrs. James M. Weeks
 Mr. and Mrs. Jonathan Weiner
 Mr. and Mrs. Torben Weis
 Mr. and Mrs. Jeffrey L. Weiss
 Suzanne and Stephen Weiss
 Mr. and Mrs. Howard B. Wentz, Jr.
 WGCH Radio
 Mr. and Mrs. George M.
 Whitmore, Jr.
 Mr. and Mrs. Laurence Whittemore
 Elizabeth D. Wick
 Mr. and Mrs. Charles M. Wilds
 Mr. and Mrs. Kirk R. Wilson
 Melissa and Jeff Wolfson
 Katherine Deane Wright
 Mr. and Mrs. Ralph M. Wyman
 Jill and Paul Yablon
 Mr. and Mrs. Christopher Yu
 Mrs. William A. Zales
 Mr. and Mrs. Arthur Zuch
 Dr. Felice R. Zwas and
 Amy Parrish, Ph.D.

Gifts in Kind

A&E's Villarina Market & Caterer
 Abigail Kirsch at Tappan Hill
 Jay Ackerman
 Alex and Ani
 All The Best Wines & Spirits
 Alliance Français
 Allura Day Spa & Salon
 Allure Day Spa
 Arcadia Coffee Company
 Aux Délices
 Baccarat
 Balducci's
 Below Deck
 Sandra K. Bendfeldt
 Bergdorf Goodman
 Mr. and Mrs. Warren Bernstein
 Betteridge Jewelers, Inc.
 Black Bear Grille
 Blush
 BMW of Greenwich
 Darianne Bramberg
 Carolee Designs, Inc.

Chef Geoff's
 Christopher Fischer
 Rona and Jeffrey Citrin
 Cocoon
 Cold Stone Creamery
 Columbus Park Trattoria
 Cook and Craft
 Costco Wholesale
 Delamar Hotel
 Dinoffer of Greenwich, Inc.
 DMS Limo LLC
 Donald J. Pliner
 Douglas Cosmetics
 Douglas Parfumerie
 Eastern Mountain Sports
 Climbing School
 Robert A. Elmo
 Emirates Airways
 Enzo Riccobene Salon
 Barbarann M. Feeney
 Jeisohn Fiala
 Mr. and Mrs. Carl S. Forsythe III
 Mr. and Mrs. L. Scott Frantz
 GAIA
 Garden Catering, Old Greenwich
 Garelick & Herbs
 Georgette Klinger Inc.
 Mr. and Mrs. Jean-Louis Gerin
 Mr. and Mrs. Peter L. Getz
 Mr. and Mrs. Robert M. Gintel
 Greenwich Department of Health
 Greenwich Orchids International
 Greenwich Sports Medicine P.C.
 Harrington's of Vermont
 Mr. and Mrs. Joseph W. Hill II
 Hoagland's of Greenwich
 Home Boutique of Greenwich
 Hostaria Mazzei
 Hyatt Regency Washington on
 Capitol Hill
 Joan Hornig Jewelry Designs
 Jon Tierney Catering
 June & Ho Inc.
 La Crémaillère Restaurant
 Landfall Navigation
 Le Wine Shop
 Mr. and Mrs. David Levien
 L'Occitane
 Lush
 Lux Bond & Green Jewelers
 Lynns, Inc.
 Mackenzie's Grill Room
 Mr. and Mrs. Waldy Malouf
 Manfredi Jewels Ltd.
 Mangia Mangia Catering
 Marcia Selden Catering
 Marco Gaytan Salon

Matrix Aveda Concept Salon
 McArdle's Florist & Garden Center
 Mr. and Mrs. John C. McAtee
 Mr. and Mrs. Robert McKinney
 Mr. and Mrs. Edward F. McLaughlin
 Milano's
 Modern Classics
 Neiman Marcus
 New Balance Athletic Shoe, Inc.
 Noëlle Spa for Beauty and Wellness
 Mr. and Mrs. Dwight F. Norrgard
 Nuage
 One & Only Reethi Rah
 Packages Plus
 Panache
 Panera Bread
 Peak Physique
 Carlos Perez
 Pet Pantry Warehouse
 Dr. and Mrs. Philip J. Piro
 Plaza Too
 J. Pocker & Son
 Polpo Restaurant
 Jenny Protas
 Quattro Figli
 Radiance MedSpa of Greenwich
 Razooks, Inc.
 Rebeccas
 Mr. and Mrs. Andrew M. Reid
 The Restaurant at Rowayton Seafood
 Richards of Greenwich, Inc.
 Rinfret Home & Garden
 Mr. and Mrs. Charles M. Royce
 Ruby's Oyster Bar & Bistro
 Rye Camera Shop
 Rye Country Store
 S.A. Chrobak, Ltd.
 Saks Fifth Avenue
 Mr. and Mrs. Jesse F. Sammis III
 Sam's Package Store
 Mr. and Mrs. Alan Q. Scheuer
 Dr. Louise Schmitt
 Ken Schwartz
 Sheaffer Pen
 Simon Pearce
 Mr. and Mrs. Jerry Sorbara
 Southern CT Newspapers, Inc.
 Splash Car Wash
 Stave Puzzles
 Stew Leonard's
 Tahiti Street
 The Fitness Edge
 Tiffany & Co.
 Town and Country Hairdressers
 Trump International Golf Club
 Trump National Golf Club
 Valbella Restaurant

Vineyard Vines
 Visage Salon de Beaute
 Maureen Walsh
 Warren Tricomi Salon
 Western River Expeditions
 Williams-Sonoma
 WOR Radio 710 AM

Matching Gifts

Altria Group, Inc.
 Bristol-Myers Squibb Foundation Inc.
 Charter Atlantic Corporation
 CMP Media LLC
 Colgate-Palmolive Company
 Deutsche Bank Americas Foundation
 ExxonMobil Foundation, Inc.
 GE Foundation
 General Re Services Corp.
 Georgia-Pacific Corporation
 IBM Matching Gifts Program
 MassMutual Financial Group
 Pepsi Bottling Group
 Pepsico, Inc.
 Pfizer, Inc.
 Pitney-Bowes, Inc.
 Prospect Hill Foundation
 Qualcomm Matching Gift Program
 Sara Lee Foundation
 Schering-Plough Foundation
 Matching Gift Program
 SmithKline Beechman Foundation
 Tudor Investment Corp.
 UBS
 UST Inc.
 Verizon Foundation-Verizon
 Volunteers Program

The donors listed provided generous support by contributing outright gifts of cash, securities, gifts in kind, or pledge payments. Every effort has been made to assure the accuracy of this list. Omissions or discrepancies should be brought to the attention of the Development Department by calling 203 863-3863.

A major affiliate of Yale University School of Medicine, Greenwich Hospital is a teaching institution with an Internal Medicine residency. All medical specialties are represented. Greenwich Hospital is accredited by the Joint Commission on Accreditation of Healthcare Organizations, and is licensed by the State of Connecticut to accommodate 174 bed-patients, 22 infants and 10 neonatal intensive care beds.

A subsidiary of:

Greenwich Health Care Services, Inc., the hospital is a not-for-profit institution governed by a voluntary Board of Trustees.

Affiliated with:

Yale University School of Medicine and Graduate School of Nursing
Antioch College
Columbia University, School of Social Work
Fairfield University
Fairfield University School of Nursing and Graduate School of Education
Hartwick College/School of Nursing
Hunter College, Graduate School of Social Work
New York University School of Nursing
Norwalk Community College
Norwalk Hospital Respiratory School
Pace University
Westchester Community College/Respiratory Therapy
Quinnipiac University College/School of Health Sciences
University of Connecticut/School of Pharmacy
University of Massachusetts/ College of Health Professions

Slippery Rock University/
College of Health, Environment and Science
Northeastern University/
Bouvé College of Health Sciences
University of Connecticut/
School of Allied Health
University of Vermont/
School of Allied Health Sciences
Sacred Heart University, Graduate Program in Physical Therapy
Springfield College/ Department of Physical Therapy
New York Medical College
University of Massachusetts/ Physical Therapy
New York University/ Occupational Therapy
Mercy College/
Occupational Therapy
James Madison University/
Occupational Therapy
University of New England/
Occupational Therapy

Licensed by:

State of Connecticut, Department of Public Health & Addiction Services as an Acute Care Facility
Nuclear Regulatory Commission in Nuclear Medicine

Member of:

American Hospital Association
New England Hospital Assembly
Connecticut Hospital Association
VHA Northeast
Association of Community Cancer Centers
National Hospice and Palliative Care Organization
Hospital Lab Alliance of Connecticut
Greater New York Hospital Association
Institute for Healthcare Improvement
IOOK Lives Campaign
American Heart Association
Association of Professionals in Infection Control

Sponsored by:

Council of Teaching Hospitals and Health Systems
National Association for Home Care and Hospice
Connecticut Council for Hospice and Palliative Care

Approved by:

American Medical Association, Council on Medical Education for Continuing Medical Education Credits
American College of Radiology in Diagnostic Radiology and Radiation Therapy
American College of Surgeons Commission on Cancer

Accreditation:

Council for Graduate Medical Education for the Yale Affiliated Internal Medicine Residency Program
American Society of Health System Pharmacists
College of American Pathologists
National League for Nursing
American Academy of Sleep Medicine
The Joint Commission
Primary Stroke Center accredited by the Joint Commission on Accreditation of Healthcare Organizations

A System Approach

Yale New Haven Health System

In 1998 Greenwich Hospital became a member of the Yale New Haven Health System, the largest and most comprehensive integrated healthcare delivery system in Connecticut. The system includes delivery networks in Greenwich, Bridgeport and New Haven, and affiliate Westerly Hospital in Rhode Island.

YNHHS is dedicated to improving the quality and scope of healthcare services by coordinating and collaborating on patient safety, clinical and service quality, program development and medical education through its relationship with the Yale School of Medicine. The system has successfully fulfilled its original goals by increasingly sharing ideas and best practices, and by coordinating and collaborating on innovative initiatives. It has also demonstrated that the benefits of a system are extensive and ongoing. As a result, Yale-New Haven, Bridgeport and Greenwich hospitals achieved stronger, more sustainable outcomes than would have been possible as independent institutions.





5 Perryridge Road
Greenwich, Connecticut 06830-4697

www.greenhosp.org

NON-PROFIT ORG
US Postage
P A I D
Permit No. 1784
Hartford, CT